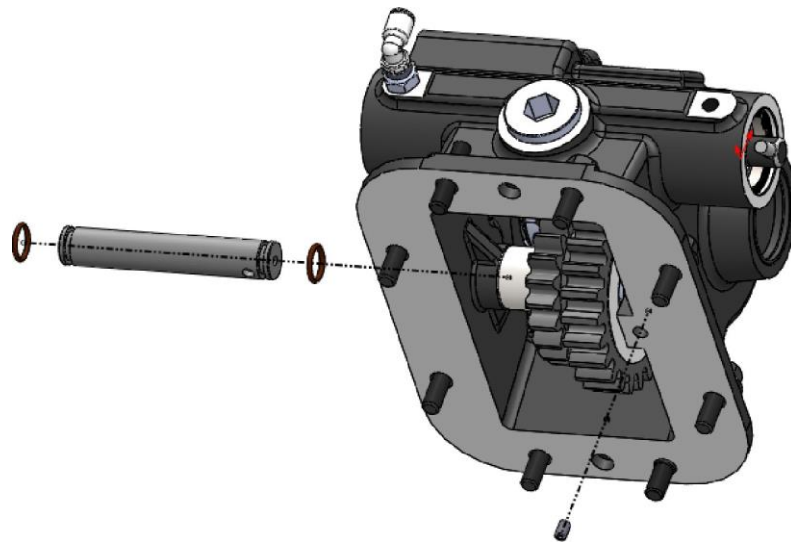


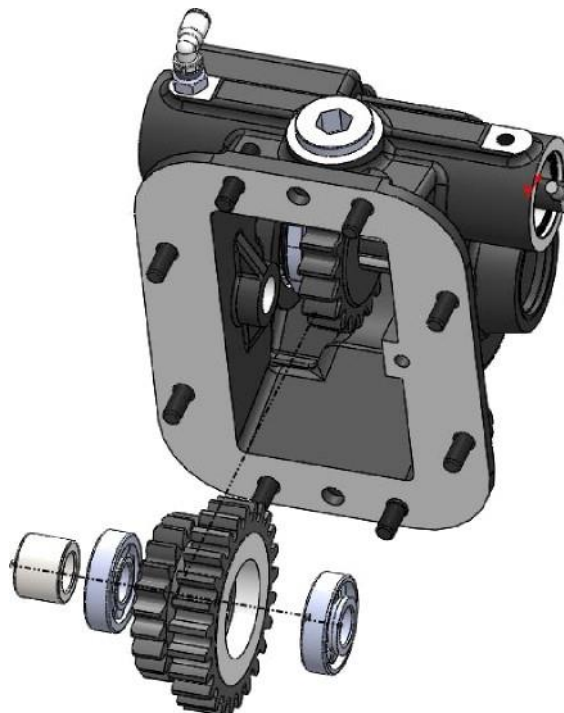
FUL.09.RTLO18918B MOUNTING/DEMOUNTING MANUAL

Follow the steps below in order to properly mount and demount Kozmaksan FULLER PTOs. Contact Kozmaksan in case of an extraordinary circumstance.

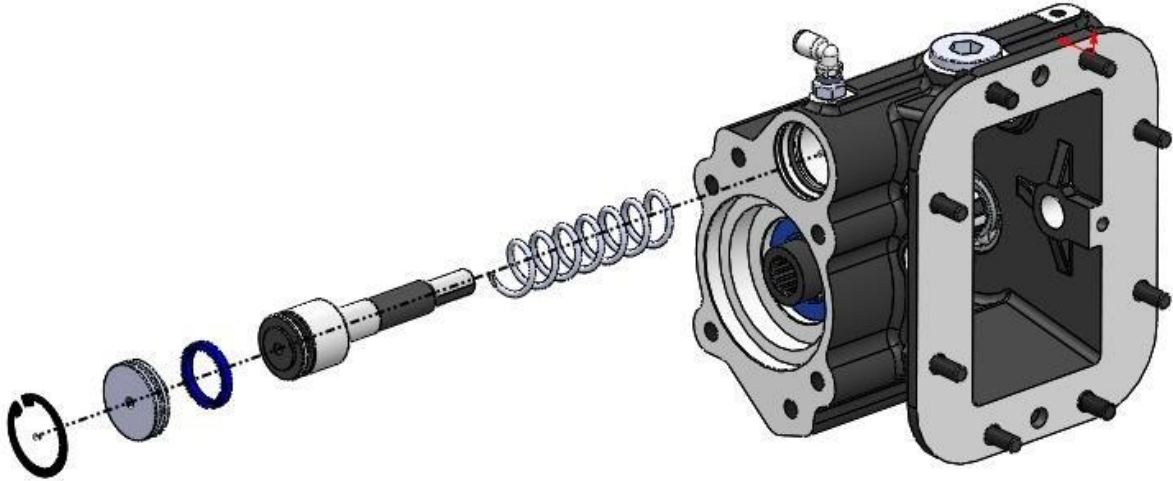
- 1- In order to remove PTO top gear, remove the setscrew on PTO flange surface and remove the PTO top shaft by slightly hammering it on pneumatic fitting side. Remove the O-rings on the shaft.



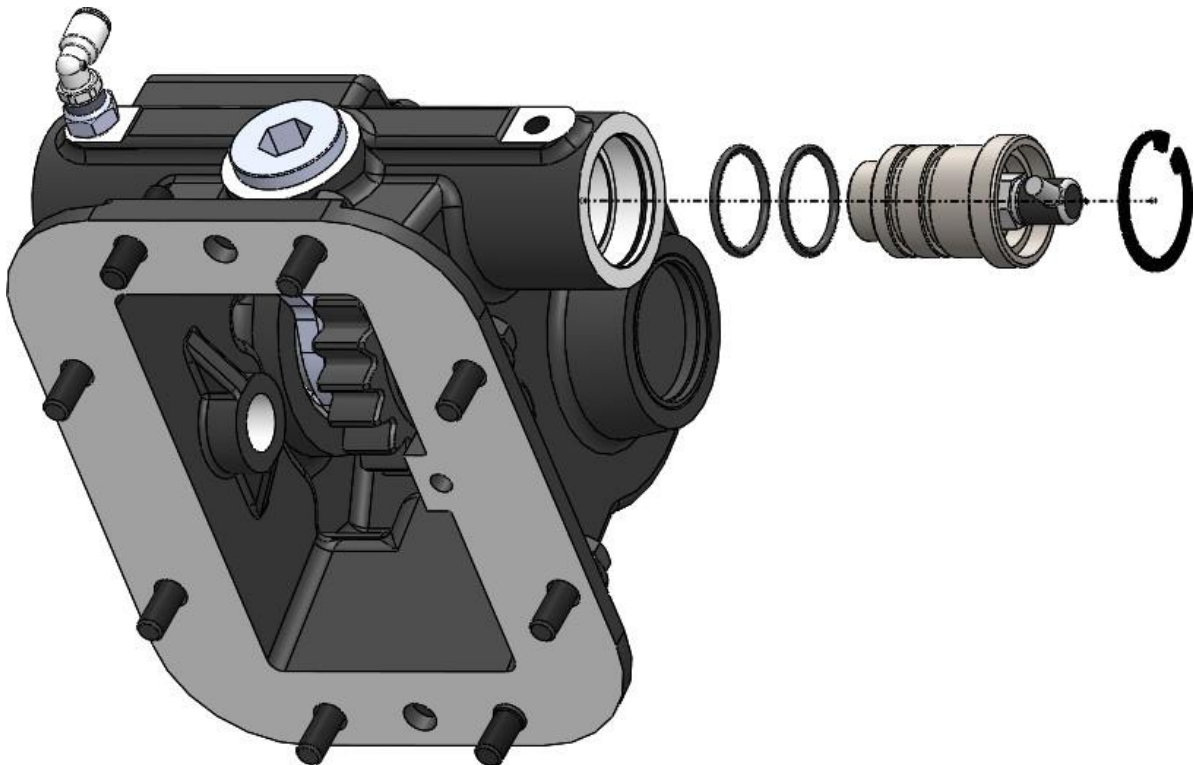
- 2- Remove the PTO top gear (a little bit of force might be required on it and the adjacent insert if it is tightly fastened).



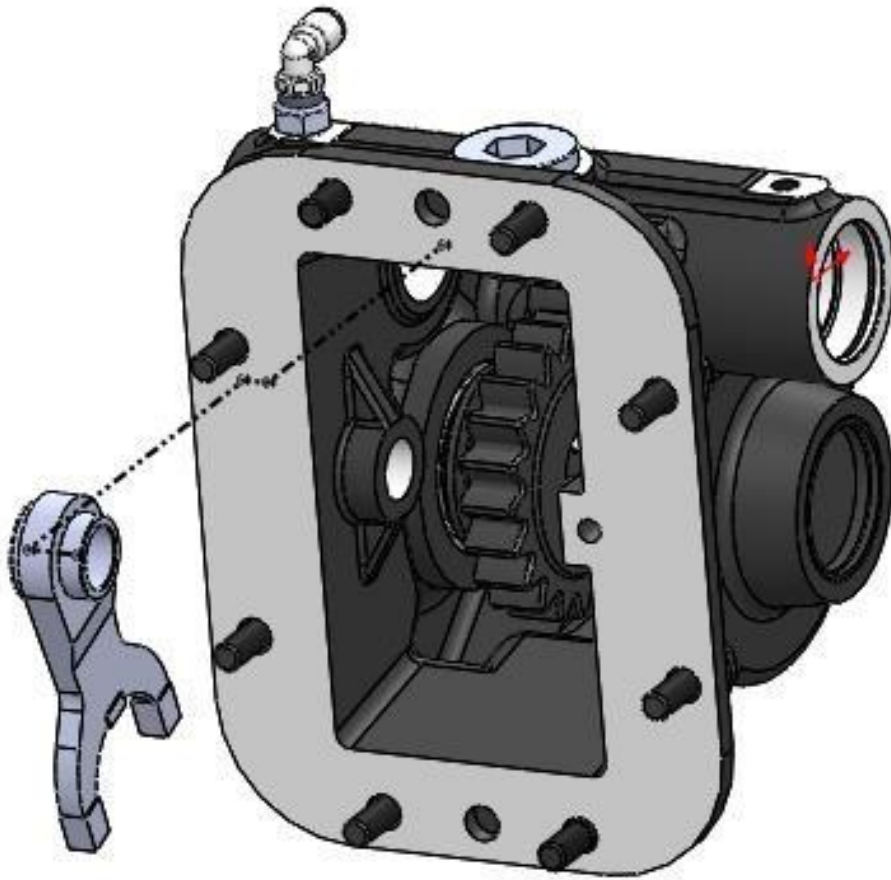
- 3- Carefully remove the segment shown on the picture. The air cap and piston might bounce due to the force applied by the spring. Also remove the air cap and piston and proceed to remove the spring.



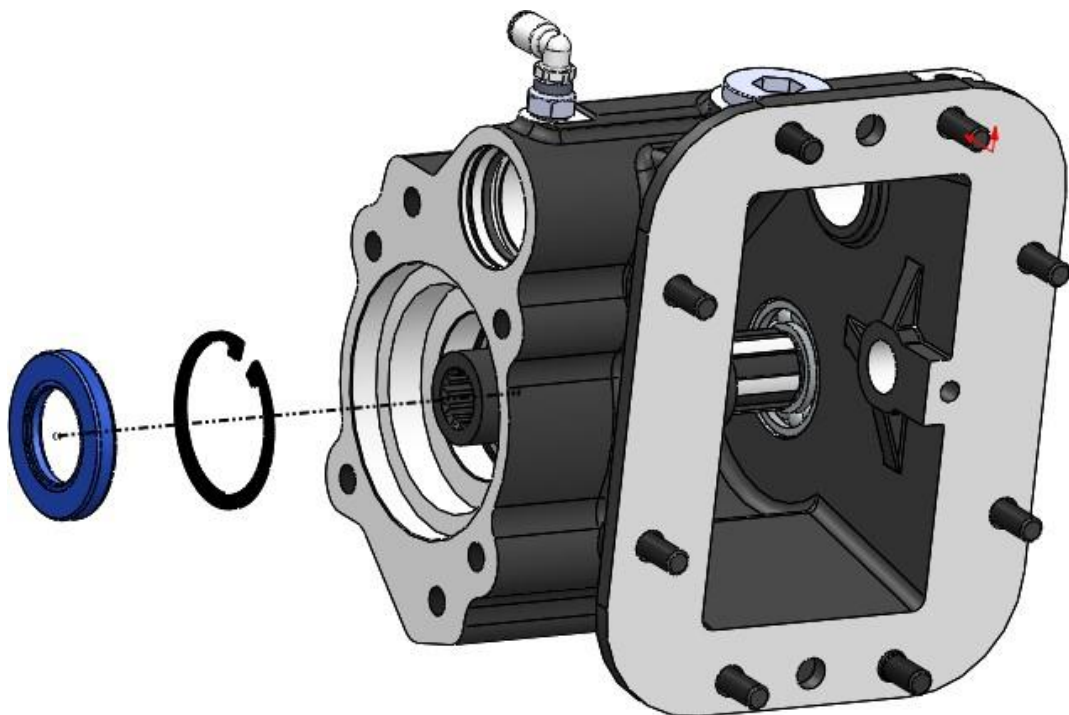
- 4- Remove the segment. Withdraw the piece outward as shown. Remove the available O-rings on the centering part.



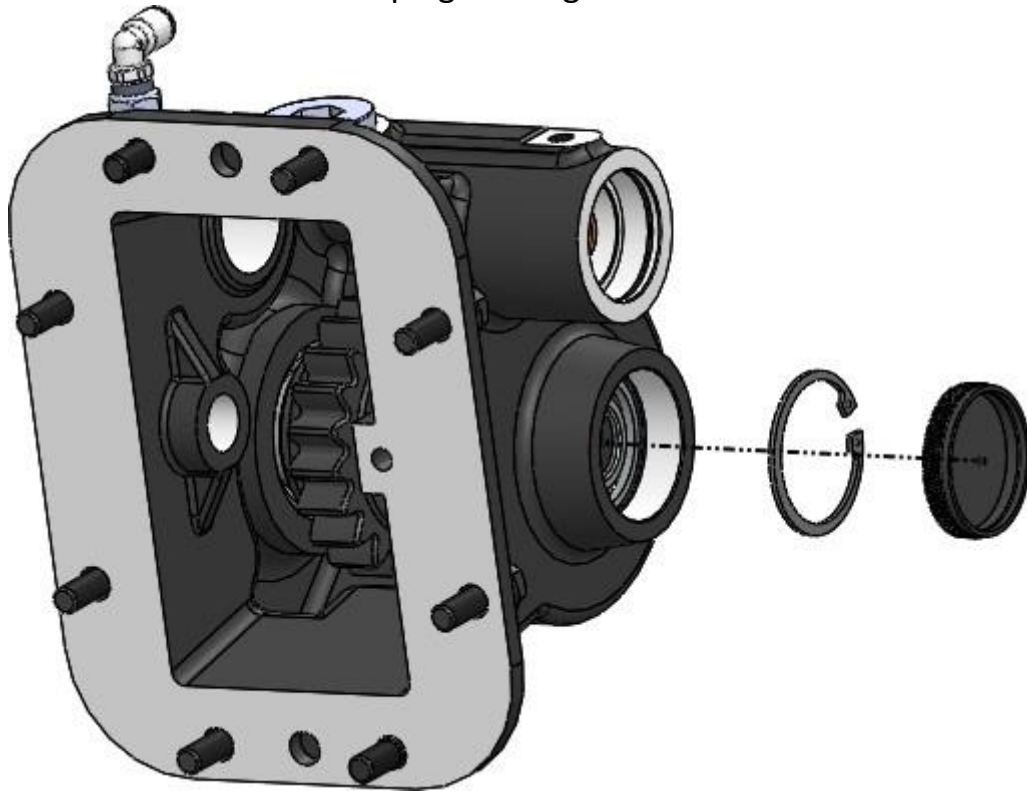
5- After removing the air piston, remove the PTO fork.



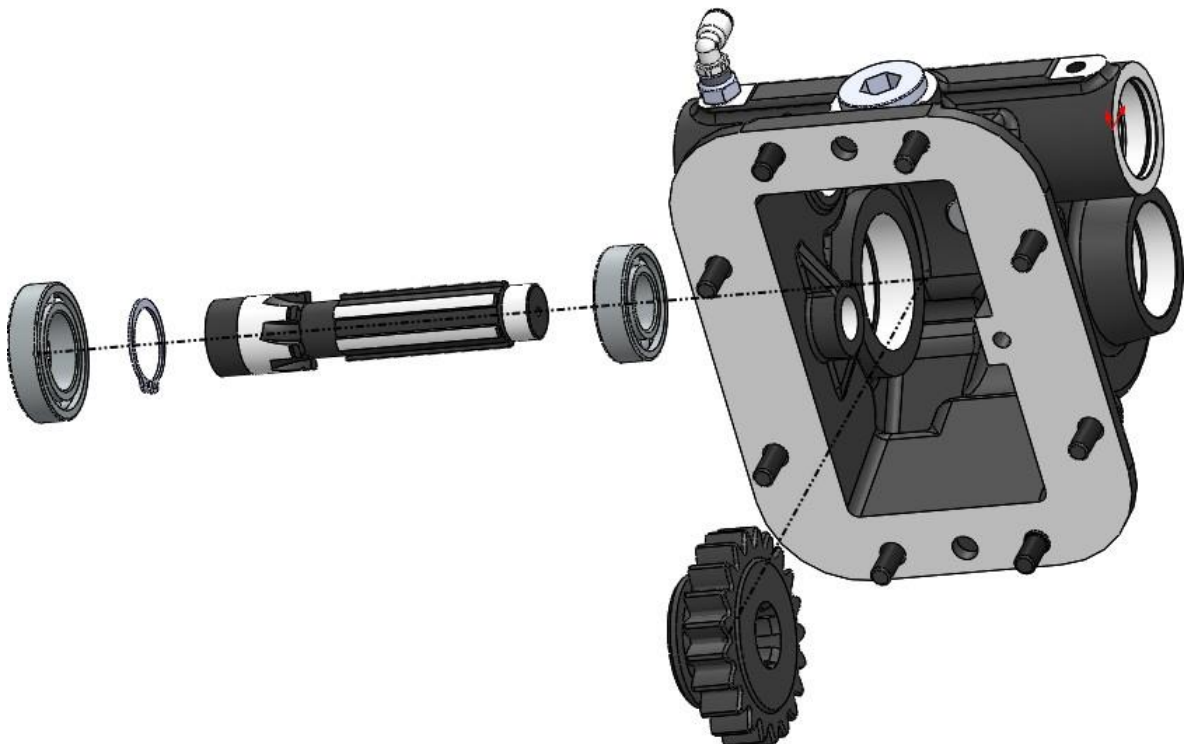
6- Remove the segment after removing the PTO oil seal.



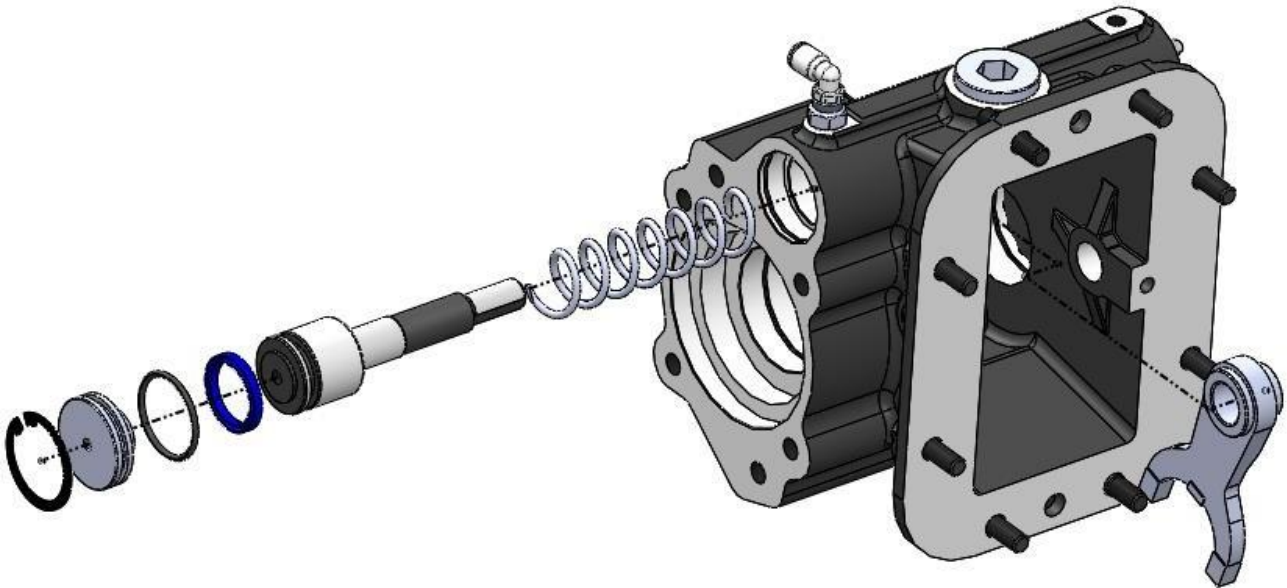
7- Remove the PTO blind plug and segment.



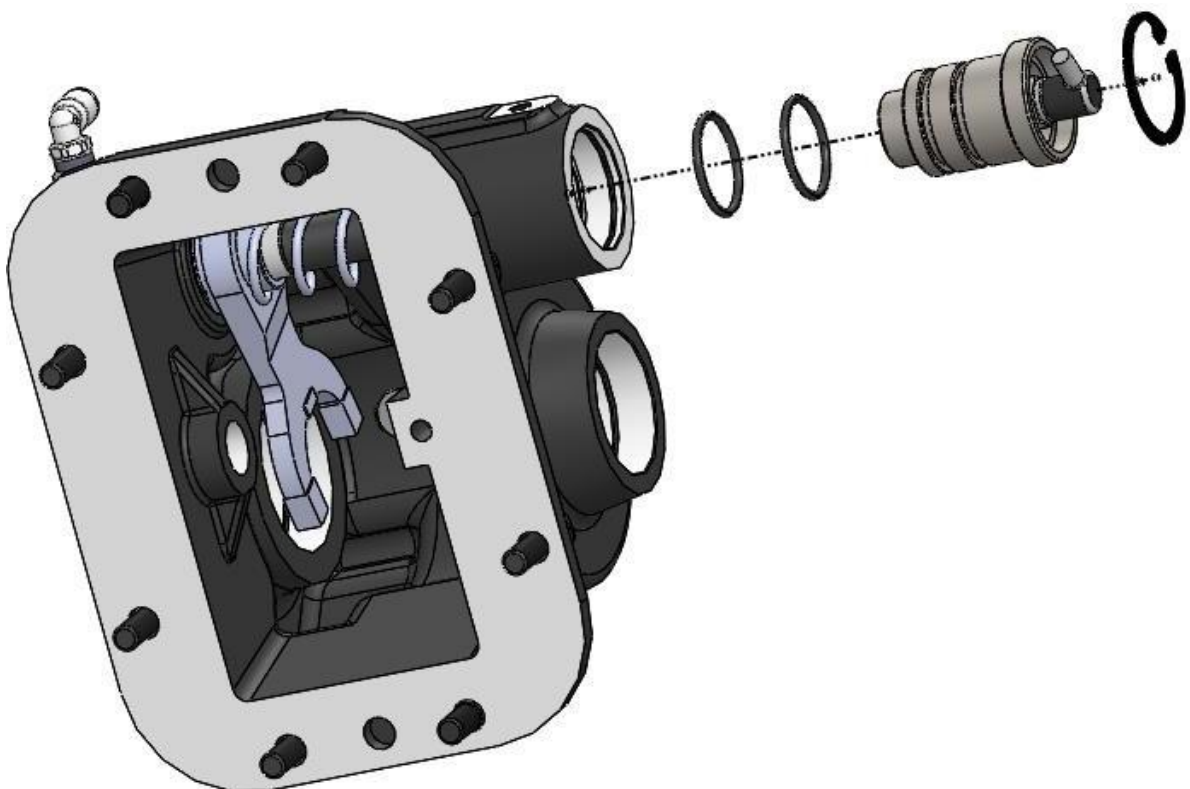
8- Remove the PTO shaft by slightly hammering it on pneumatic fitting side. Remove the segments and bearings on the shaft. Next, remove the PTO bottom gear as shown below. Pay attention not to cause damage to the gear due to falling when removing the shaft.



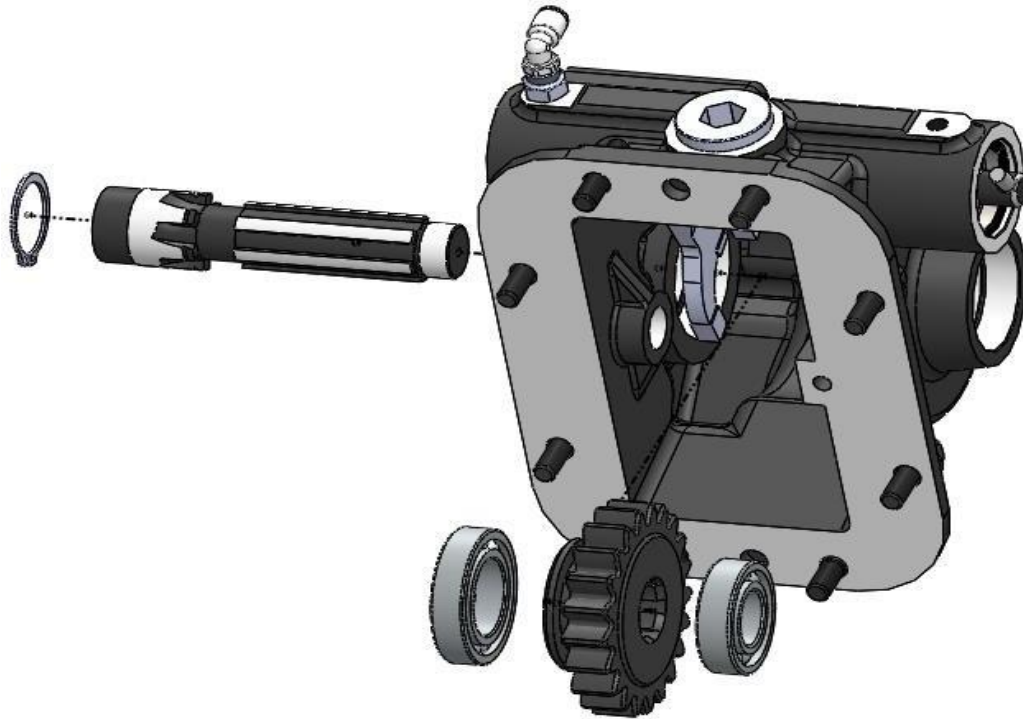
9- Insert the PTO fork and spring back into the body. Replace the air proofing seal inside the pneumatic piston if required. Next, mount the pneumatic piston and air cap into the body by centering the fork.



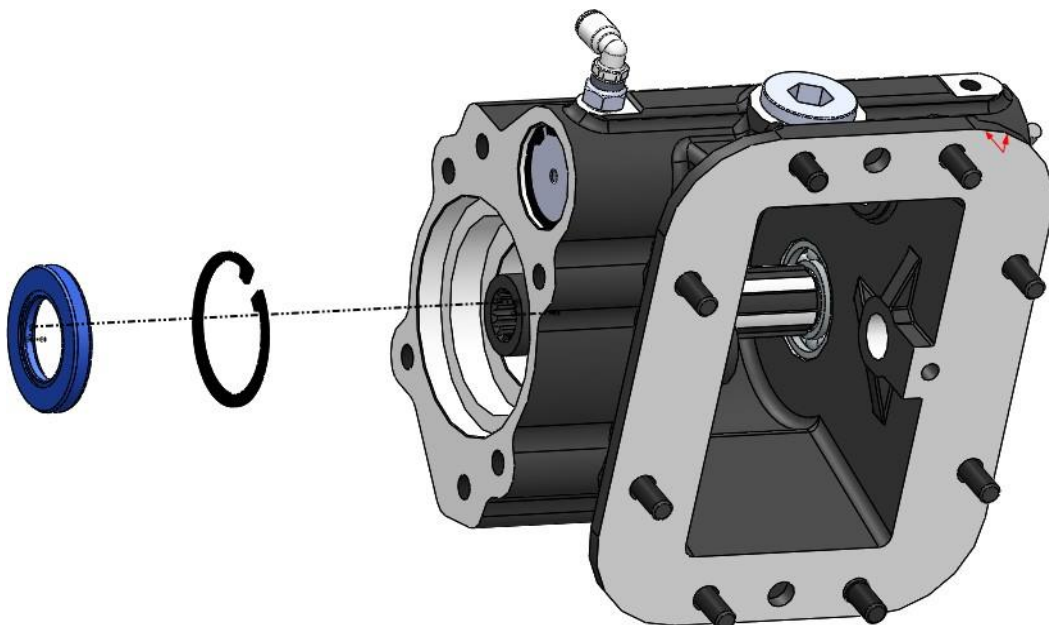
10- Mount back the O-rings on the PTO centering part after removing and greasing them. Then, mount the centering part along with the segment as indicated. Afterwards, the functionality of the pneumatic mechanism must be checked. It must be ensured that the mechanism works by supplying air.



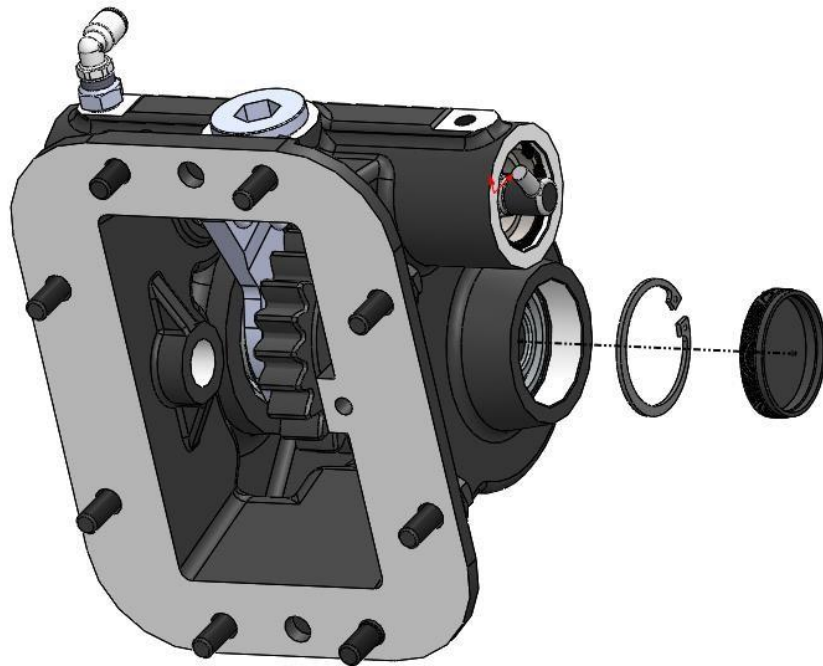
11- Place the PTO bottom gear into the body. Mount the segment on the segment channel on PTO shaft and proceed to mount the bearings on the shaft. Afterwards, the PTO top gear length check must be conducted. Next, mount the PTO fork on the bottom gear synchromesh.



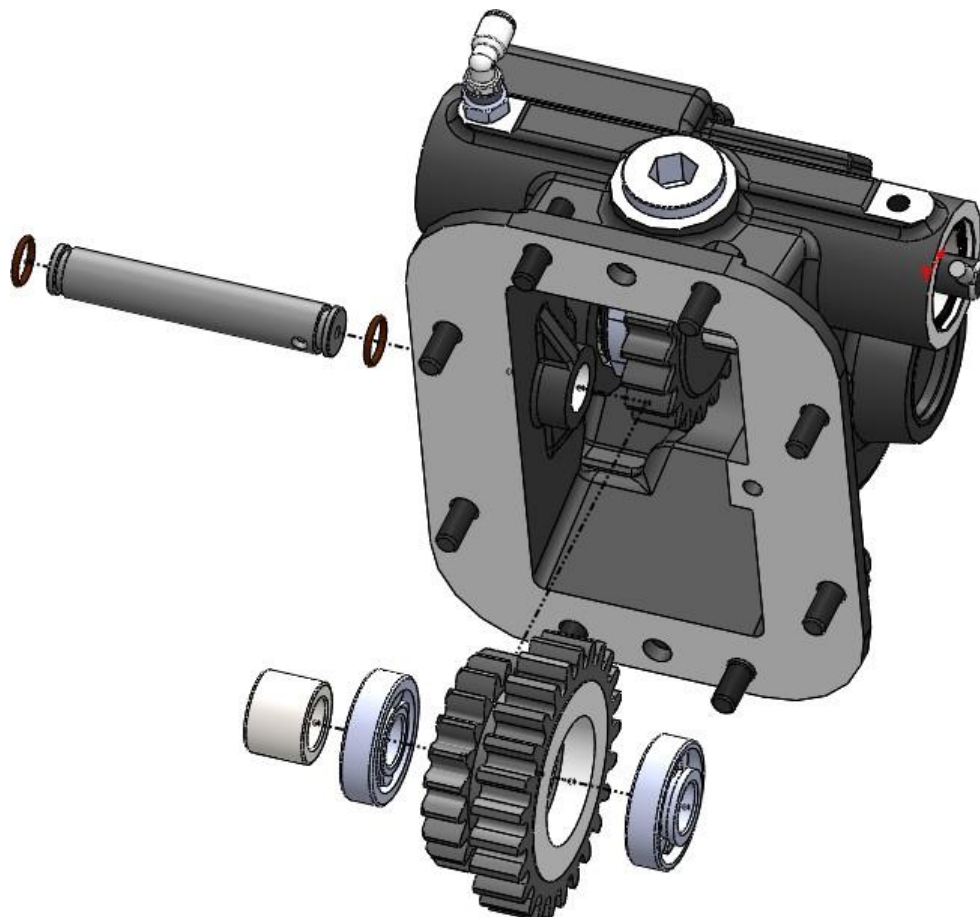
12- Insert the segment to fasten the bearings. Mount the new oil seal after the segment.



13- Mount the PTO segment and the new PTO plug.



14- Insert the PTO top gear shaft into the body. Insert the greased top shaft O-rings by sliding the shaft inside back and forth after putting it into the body. Next, place into the body the insert, bearing, top gear and bearing by fitting them through the top shaft. Next, the top gear length check must be conducted.



15- Mount setscrew instead of bolts on the flange surface in order to fasten the PTO top shaft.

